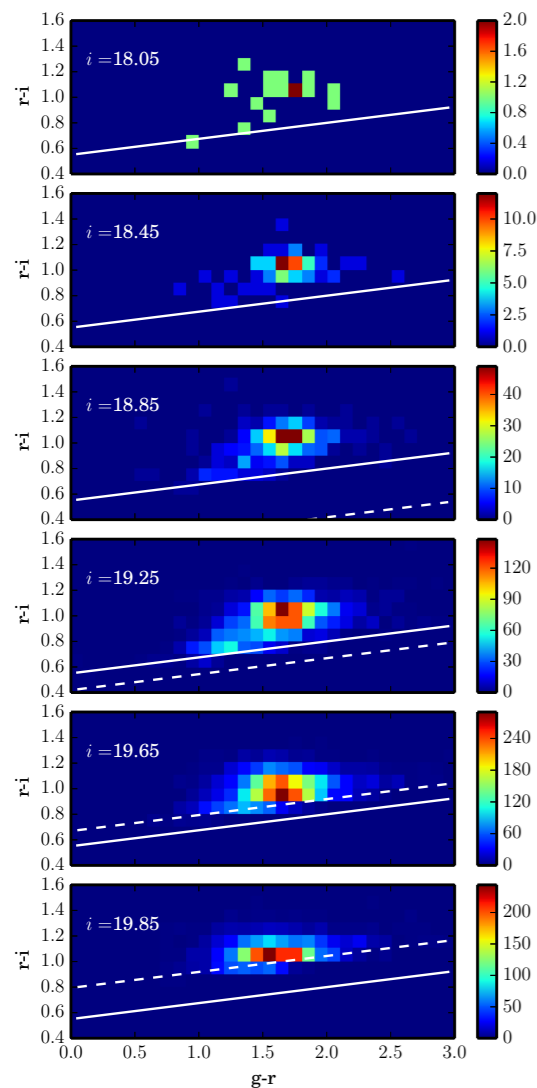


# A Forward Modeling Approach for the Evolution of the most Massive Galaxies in the Universe

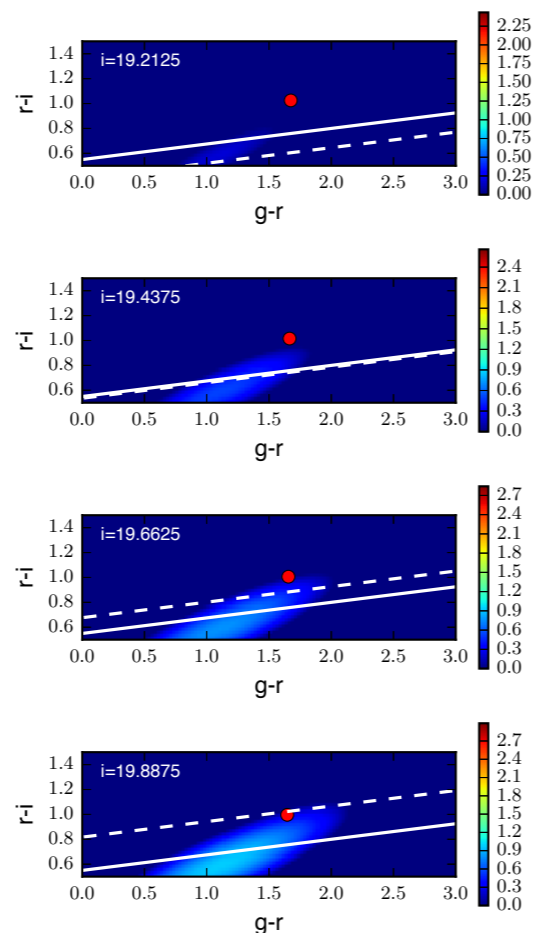
Antonio D. Montero Dorta (University of Utah, USA)

A. Bolton (Utah), Y. Shu (NAOC), J. Brownstein (Utah) and the BOSS Galaxy Evolution Working Group

Observed color-color-magnitude distributions



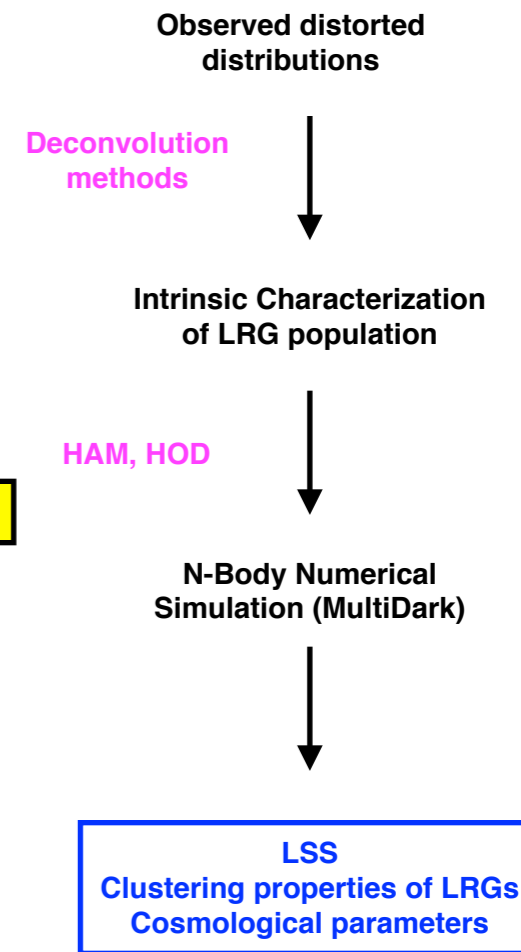
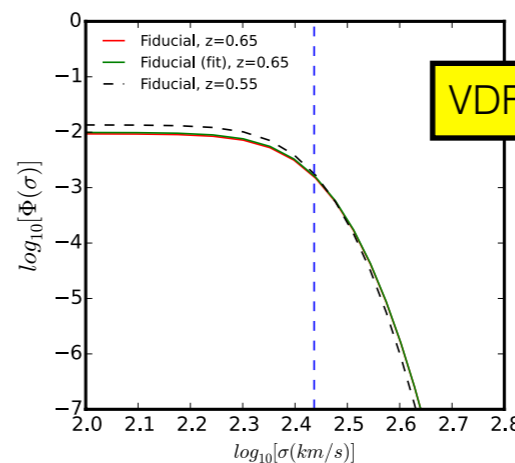
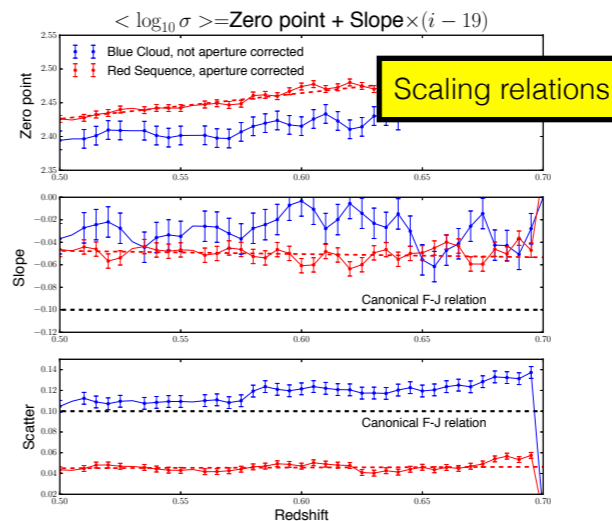
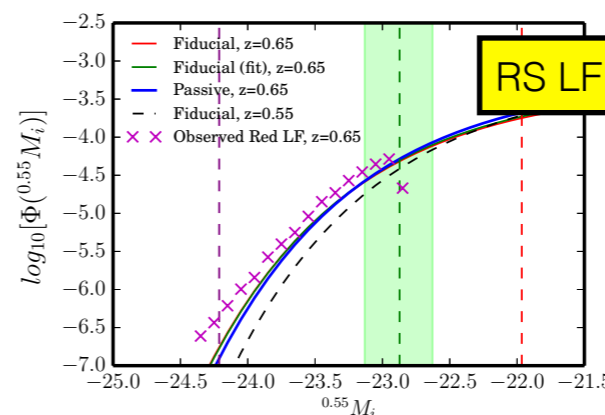
Error-Deconvolved Intrinsic distributions



**Methods:**

- Bayesian Hierarchical Approach
- Unbinned Maximum Likelihood approach for deconvolution
- Red/blue modeling based on the phenomenology of the color-magnitude diagrams

Intrinsic properties of the LRG population



REFERENCES:  
 Montero-Dorta, Bolton, Brownstein et al, 2015, arXiv:1410.5854  
 Montero-Dorta, Shu, Bolton & Weiner, 2015, arXiv:1505.03866